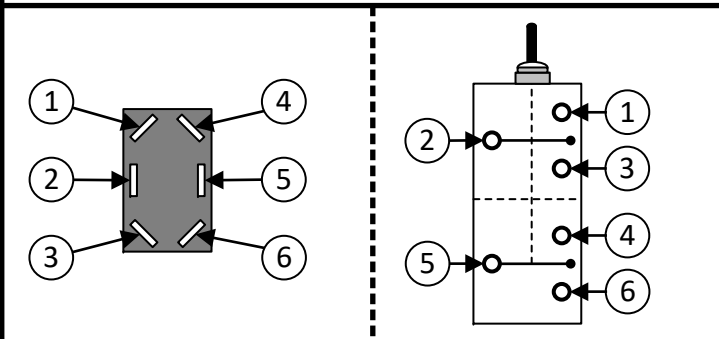


Control System:  
 • Spectra Connect  
 • 24VDC Input Voltage

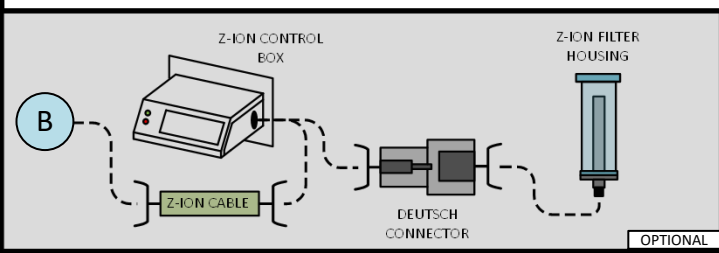
Applicable System Numbers:  
 • CT-340C-24VDC

Detail View 2: DPDT Switch Operational Schematic



**RUN (AUTO):** MIDDLE – NO CONNECTIONS MADE  
**RUN (MANUAL):** UP – PIN 2 TO PIN 3, PIN 5 TO PIN 6  
**RUN (SERVICE):** DOWN – PIN 2 TO PIN 1, PIN 5 TO PIN 4

Detail View 1: Z-Ion Wiring/Connection (Optional)

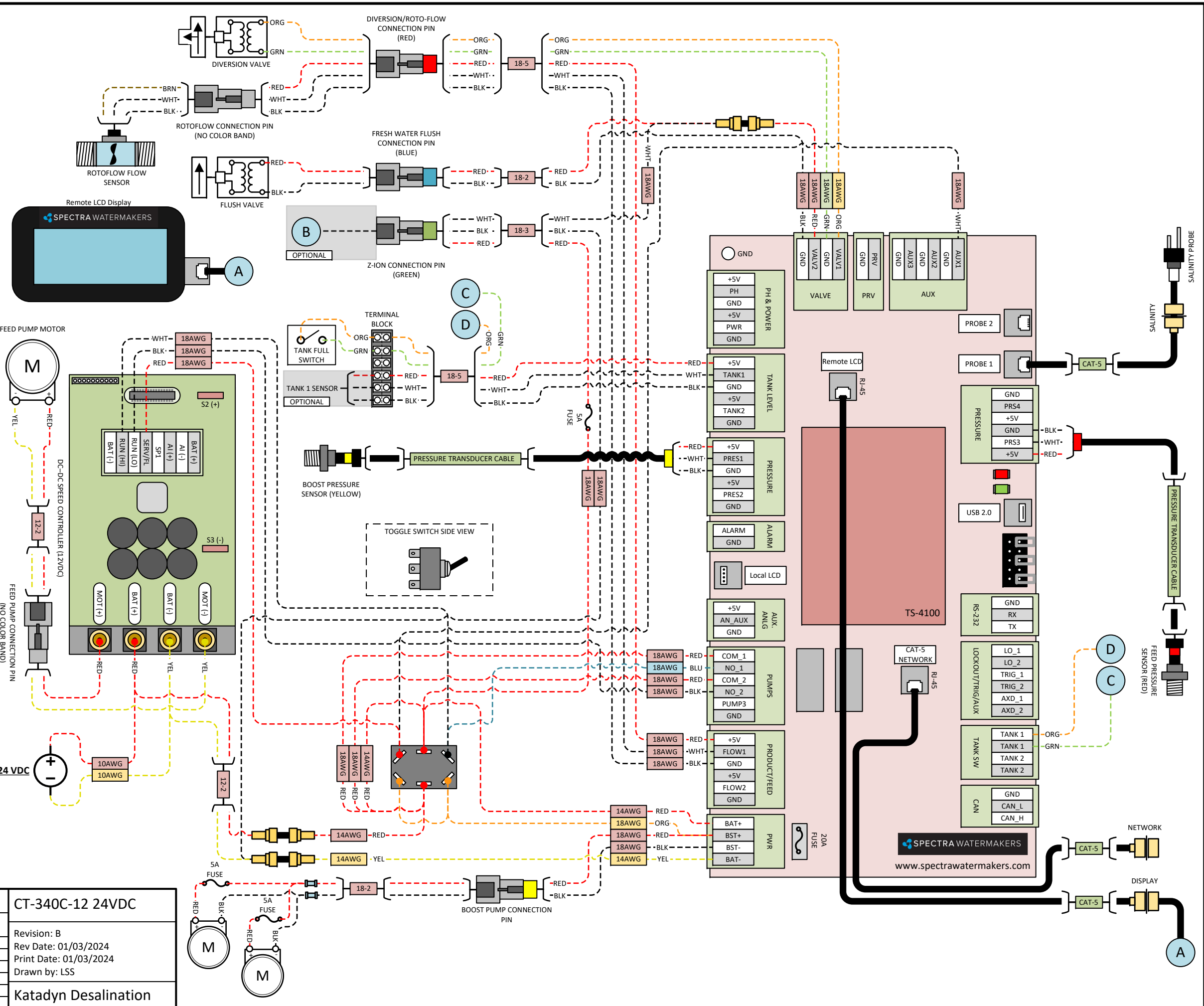


List of Symbols: KEY

BLK	WIRE COLOR LABEL – INDICATES A BLACK WIRE
RED	WIRE COLOR LABEL – INDICATES A RED WIRE
YEL	WIRE COLOR LABEL – INDICATES A YELLOW WIRE
ORG	WIRE COLOR LABEL – INDICATES A ORANGE WIRE
GRN	WIRE COLOR LABEL – INDICATES A GREEN WIRE
BLU	WIRE COLOR LABEL – INDICATES A BLUE WIRE
BRN	WIRE COLOR LABEL – INDICATES A BROWN WIRE
18-2	WIRE GAUGE LABEL – INDICATES A GAUGE FOR A CABLE OF MULTIPLE WIRES, FORMATED AS (WIRE GAUGE)-(NUMBER OF WIRES IN CABLE)
18AWG	WIRE GAUGE LABEL – INDICATES A GAUGE FOR A SINGLE WIRE
	FUSE – NECESSARY SIZING INFORMATION CALLED OUT ON WIRING DIAGRAM
	CONNECTION – MALE/FEMALE SPADE WIRE TERMINAL
	CONNECTION – BUTT CONNECTOR WIRE TERMINAL
	WIRING – SINGLE WIRE CUSTOM – SOLAR CHARGING CABLE
	WIRING – SINGLE WIRE BLACK OR WHITE – TYPICAL COMM COLOR
	WIRING – SINGLE WIRE RED – TYPICAL DC POWER POSITIVE COLOR
	WIRING – SINGLE WIRE YELLOW – TYPICAL DC POWER NEGATIVE COLOR
	WIRING – SINGLE WIRE ORANGE – TYPICAL FUSE WIRING COLOR
	WIRING – SINGLE WIRE GREEN – TYPICAL GROUNDING COLOR
	WIRING – SINGLE WIRE BLUE – TYPICAL SIGNALING COLOR
	WIRING – SINGLE WIRE BRN – NOT A TYPICAL COLOR
A	NOTATION – WIRE CONTINUITY SYMBOL INDICATES CONTINUITY BETWEEN MATCHING ALPHABETIC SYMBOLS – LARGE ALPHABETIC CIRCLE

Revision History: CT-340C-12/24V

Rev No:	Date:	Description:
A	08/21/2023	Initial Wiring Diagram for Catalina CT-340-12 24V, 12VDC/24VDC
B	01/03/2024	Updated to Include Dual boost Pumps - JCM



CT-340C-12 24VDC

Revision: B  
 Rev Date: 01/03/2024  
 Print Date: 01/03/2024  
 Drawn by: LSS

Katadyn Desalination

SPECTRA WATERMAKERS  
 www.spectrawatermakers.com